

Product Name
Monoclonal Human
Anti-Citrullinated Fibrinogen Immunoglobulin, clone F11

CAT No.
MQR2.101-100

Size
100 µg

Edition 07-08-2008



POSTAL ADDRESS Schoutstraat 58
6525 XV Nijmegen
The Netherlands

TELEPHONE +31 (0) 24 – 361 42 53
MOBILE +31 (0) 6–16 94 04 90
FAX +31 (0) 24 – 350 21 54

E-MAIL sales@modiquestresearch.com
WEBSITE www.modiquestresearch.com

Intended use

This product is for research use only. NOT for use in diagnostic or therapeutic procedures.

A license from ModiQuest Research is required for use outside the research field.

This product is intended for use in immunoblotting or ELISA.

Reagent provided

The antibody has been lyophilized in a 10 mM ammonium bicarbonate buffer. Each vial contains 2 mg BSA.

Isotype

IgG1, λ

Specificity

Specificity has been tested in immunoblotting (figure 1) and ELISA. Additional tests for cross reactivity have not yet been performed.

Purity

Protein A purified.

Precautions

1. For professional users.
2. As with any product derived from biological sources, proper handling procedures should be used.
3. The product may be used in different techniques and in combination with different sample types and materials, therefore each individual laboratory should validate the test system applied.

Preparation of the antibody

Dissolve the antibody in a 100 mM Tris-HCl pH8.0 buffer, containing 0.05% sodium azide (NaN₃).

Recommended antibody concentration: 0.5 mg/ml.

NOTE: Be careful opening the vial since the antibody resides in a vacuum.

Storage instructions

Dissolve the antibody and store at 2-8°C.

Dilution guidelines

Immunoblotting: 1:(200 x F) – (1000 x F).

ELISA: 1:(200 x F) – (1000 x F).

Other applications: since applications vary, you should determine the optimum working dilution of the product that is appropriate for your specific need.

For the value of the multiplication factor F, see label on vial.

Unless the stability in the actual test system has been established, it is recommended to dilute the product immediately before use.

Relevance

Citrulline, while being an amino acid, is not built into proteins during protein synthesis, as it is not coded for by DNA, yet several proteins are known to contain citrulline. These citrulline residues are generated by a family of enzymes called peptidylarginine deiminases (PADs), which convert arginine into citrulline in a process called citrullination or deimination. Proteins that normally contain citrulline residues include myelin basic protein (MBP), filaggrin, and several histone proteins, while other proteins, like fibrin and vimentin can get citrullinated during cell death and tissue inflammation.

Patients with rheumatoid arthritis often (at least 80% of them) develop an immune response against proteins containing citrulline. Although the origin of this immune response is not known, detection of antibodies reactive with citrulline containing proteins or peptides is now becoming an important help in the diagnosis of rheumatoid arthritis.

Product Name

Monoclonal Human
Anti-Citrullinated Fibrinogen Immunoglobulin, clone F11

CAT No.

MQR2.101-100

Size

100 µg



POSTAL ADDRESS Schoutstraat 58
6525 XV Nijmegen
The Netherlands

TELEPHONE +31 (0) 24 – 361 42 53
MOBILE +31 (0) 6–16 94 04 90
FAX +31 (0) 24 – 350 21 54

E-MAIL sales@modiquestresearch.com
WEBSITE www.modiquestresearch.com

Edition 07-08-2008

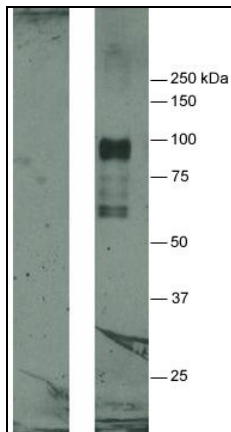


Figure 1: Immunoblot, loaded with human fibrinogen (Sigma; cat no F4883) in the left lane and rabbit PAD2 (sigma; cat no P4874) deiminated fibrinogen in the right lane. The blot has been incubated with anti-citrulline Immunoglobulin, clone F11, 1000X diluted from a 0.5 mg/ml stock solution in MPBST (137 mM NaCl, 2.7 mM KCl, 1.5 mM KH₂PO₄, 8.1 mM Na₂HPO₄, 0.05% v/v Tween-20 (Merck), 5% w/v Non Fat Dry Milk (ELK)).

References

1. Venrooij et al. Autoantibodies to citrullinated antigens in (early) rheumatoid arthritis. *Autoimmun Rev.* 2006 Nov;6(1):37-41. Epub 2006 Apr 19.

TRADE REGISTER Arnhem 09148575
V.A.T. NL 8140.81.058.B01
BANK ACCOUNT Postbank 5261629
IBAN NL90PSTB0005261629
SWIFT/BIC PSTBNL21