



Proprietary human and mouse anti-citrulline antibodies

Introduction

In Rheumatoid Arthritis and Multiple Sclerosis citrullination of various proteins has been suggested to play a major role in the ontogeny of these diseases. The availability of anti-citrulline antibodies for analysing diseased tissue and cells might open new methods for research towards these diseases.



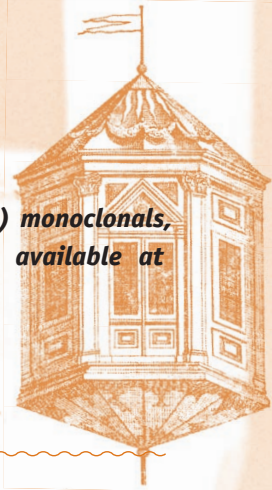
Monoclonal Antibody Technology

Proprietary anti-citrulline antibodies

Using its highly efficient (recombinant) antibody generation technology, ModiQuest Research has generated various unique proprietary human and mouse anti-citrulline peptide antibodies for proteomic and diagnostic applications.

Specifications:

Several human and mouse (recombinant) monoclonals, specific for deiminated fibrinogen are available at ModiQuest Research.



Western blot

Deiminated fibrinogen

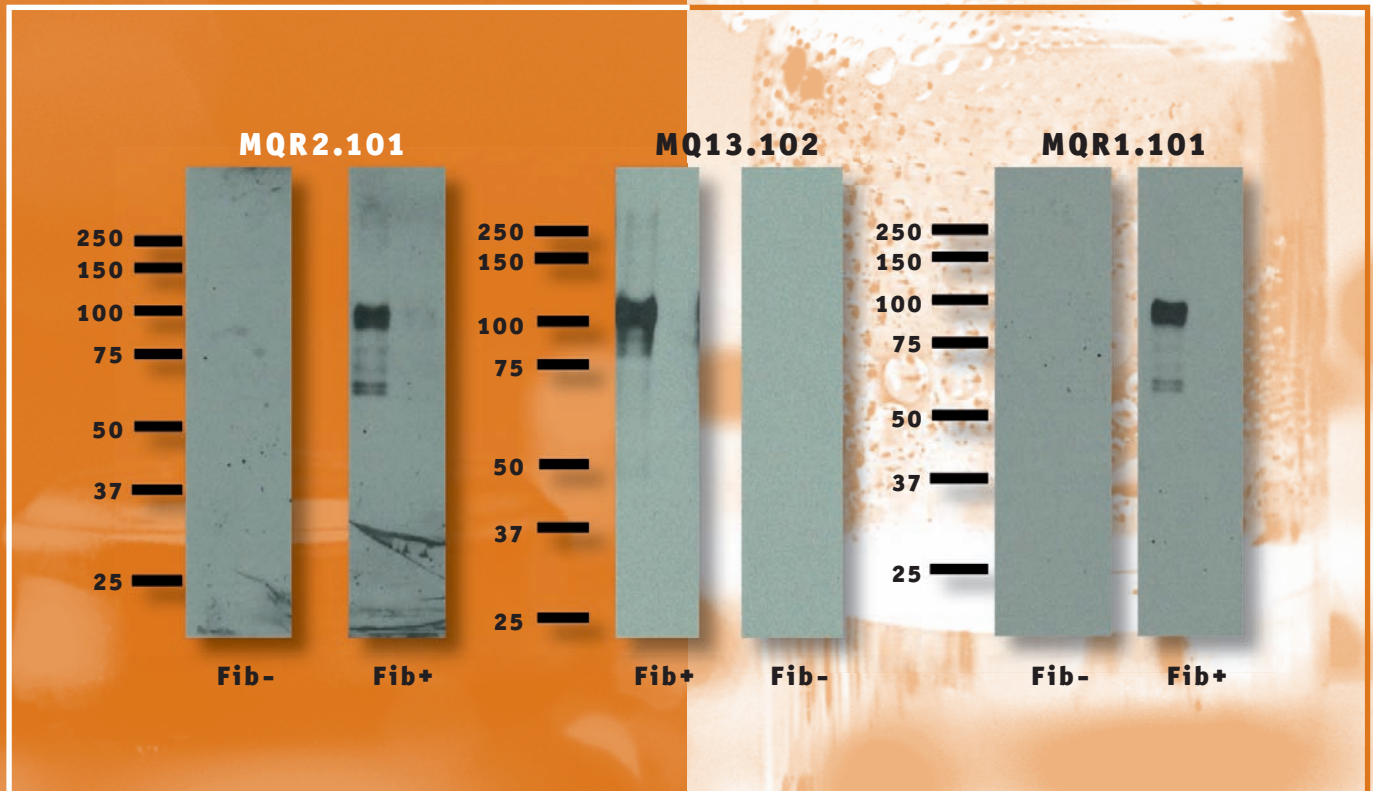


FIGURE 1

Immunoblot, containing human fibrinogen (Fib -, Sigma) and deiminated fibrinogen (Fib +, deiminated with rabbit PAD2 enzyme (Sigma)), incubated with antibody (0.5 mg/ml) 1000X diluted in MPBST.

Fc-origin	Clone cat #
Mouse	MQR1.101
Human	MQR2.101
Mouse	MQ13.102

